

Size M (45 - 55 pounds)

Make a custom jacket using a recycled garment,
or 1 yard of outer fabric and 1 yard of lining.

Dog Coat Pattern & Instructions

With Optional Letter Applique

Suggested materials for the dog coat:

- Recycled quilted jacket
- Recycled waterproof jacket (stadium jacket) with fleece lining
- or
- Ripstop nylon, wool or cotton for the outside of the coat
- Polar fleece, flannel or soft wool for the lining

Other materials you'll need:

- Sew-On Heavy duty Velcro (not the peel and stick kind, it's too hard to sew through)
- Bias binding tape, ribbon, or contrasting fabric if desired, to finish the edges of the coat
- For the applique: Scrap of leftover fabric, "Heat n Bond Iron-On Adhesive"

1 Measure Your Dog.

Measure from neck to tail, and around the middle.

length _____

girth _____

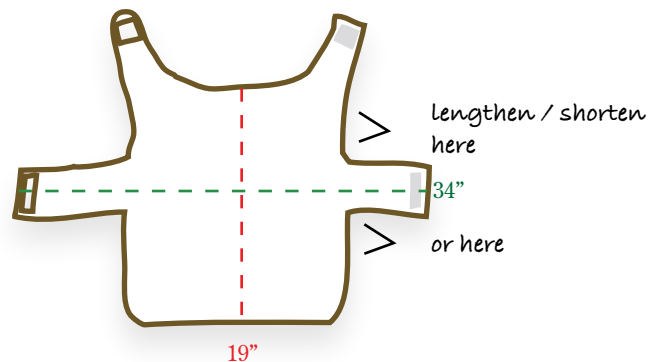
2 Adjust The Pattern

Enlarge or shrink the pattern according to your own dog's measurements. Make sure that the coat will cover the dog well, and that the straps fall in natural places on the dog's body, especially on the underside.

Adjustment Tips

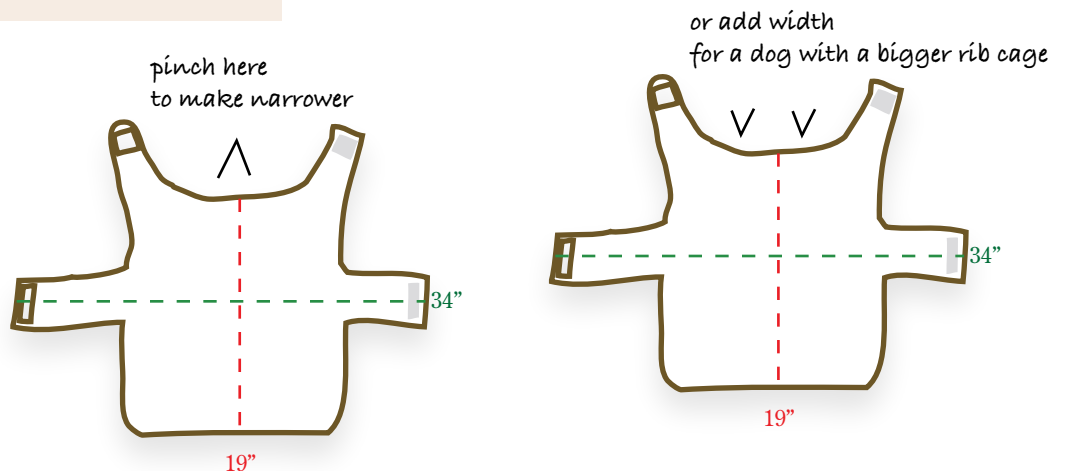
To make the pattern longer or wider, don't just tack on extra fabric to the back or make the straps longer unless it will be a good fit. You may have to add length before the midsection strap for the coat to fit correctly.

For dogs with a narrower girth, make the pattern narrower by subtracting area around the midline.



3 Test The Pattern

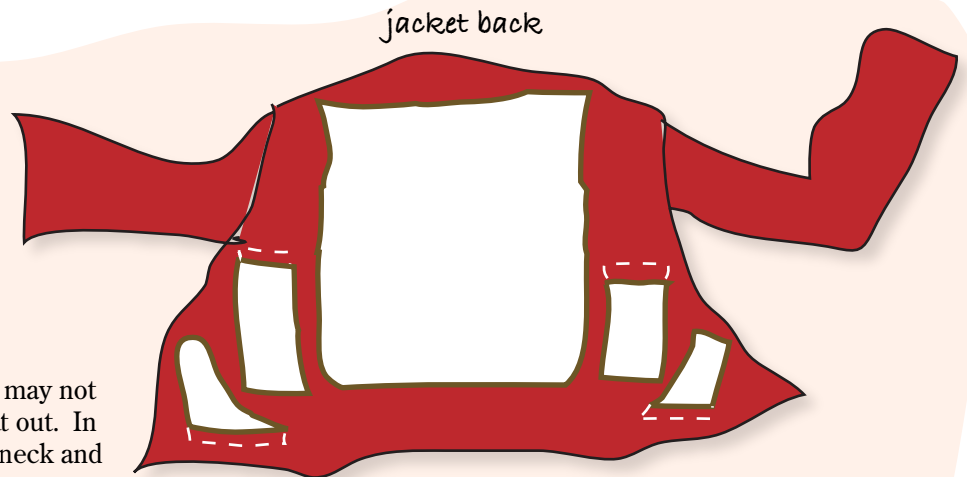
Before you start cutting your fabric, it is a good idea to cut a test coat out of paper bags and see if it will fit your dog. This is very easy and will save you a lot of time.



4 Pin & Cut

Pin your pattern to the recycled coat or fabric, and cut. Coats can be hard to cut, so make sure you have scissors that are up to the job.

If you're using a recycled garment, you may not have enough room to cut the whole coat out. In that case, make separate pieces for the neck and girth straps. Be sure to add in enough seam allowance, especially if you're using a thick or quilted jacket.



Make separate pieces for neck and girth straps if you don't have enough room, and add extra length for seam allowance (dotted lines.)

5 Sew and Attach Velcro

If you need to, sew the straps onto the body. Put the coat on your dog so that you can figure out where the velcro goes. You probably won't be able to pin the velcro on the coat while your dog's modeling it, so use a pencil or fabric marking pen to mark the place.

If you want to be extra careful, baste the velcro in place and get your dog to try the coat on again. Once you're satisfied with the fit, sew the velcro to the coat.

6 Finish Edges

Two ways to finish the coat's edges:

- 1) Turn $\frac{1}{4}$ " of the coat and lining edge to the inside, then topstitch it by machine or by hand. By hand, you could also use a blanket stitch to finish the edges.
- 2) Sew bias binding, ribbon or contrasting fabric around all edges of the coat. If using new fabric, stack outer fabric on top of the lining, then sew on the edge finishing. This is a 2-step process recommended for experienced sewers. For directions, see this web page: <http://www.sewing.org/html/biasbinding.html>.

7 Easy Optional Applique

Cut the letters out of leftover or contrasting fabric, then follow the iron-on directions on the package of Heat n Bond Iron-On Adhesive. Basically, you put the adhesive on the fabric first, and then you cut out the letters. I used a freehand design on the "Friendly" coat for Time Out Chicago, but you can also print out a font and pin it to the adhesive-enforced fabric. Cut through the paper and the fabric with sharp scissors or x-acto knife.

Other brands of fusible webbing can be used, such as Stitch Witchery (for lighter fabrics) or Steam-A-Seam, though I find that Heat n Bond works well.

Font Suggestions For Applique

Choose a font that is easy to cut out. Something too ornate, like a fancy script with thin lines, might not be the best choice. There are many free font sites with funky fonts that are perfect for a lettering job like this. You can also embroider, silk screen, or stencil the lettering for a different look.



This is Reese, a red nosed pit bull, modeling the original "Friendly" dog coat I made for the pet edition of Time Out Chicago.

Once you finish your dog coat, I'd love to see the results. Take a quick photo and email it to didurkes@yahoo.com. I will feature it on my blog, FineDivingChicago.com.

You can visit the blog for more projects and original patterns. I update with a new project every week, plus one project a month for Time Out Chicago's "Tossed and Found" column.

- Diana

The next page is the dog coat outline in real size (page size 36" x 30".) Use your print manager's settings to tile the pattern onto several sheets of letter-sized paper, and use clear tape to piece it together into one pattern.

You can also just draw your pattern freehand using your dog's measurements - just follow the basic shape, and make sure to try it on your dog before you cut the real thing. If you're making it out of paper bags first, crumple them up to soften them.

